

Price List

Floor Care







Welcome to Miele

IMMER BESSER (forever better) — our pledge

When our two great grandfathers were in the process of founding the Miele company, they had to make sure they stood apart from the competition in order to be successful. There are effectively only two ways of doing this: either by being cheaper than the rest or by being better than the rest. It is not really possible to be both at the same time.

They decided to be "better" than the rest.

Numerous best in class awards and certificates attest to the fact that Miele has continued to renew its commitment to being "immer besser" throughout the past 119 years. However, the millions of satisfied customers around the world are perhaps the most important endorsement.

At the heart of this success lies a continuity of values and goals which are typically only found in companies which have been family-run for generations, rather than in businesses which are guided by the often short-term interests of the stock market.

It is in this sense that Miele has embodied first-class product quality and German engineering since 1899. Miele also stands in equal measure for respect, fairness and mutual esteem towards sales partners, customers, suppliers, employees and neighbors. Buying a Miele is an environmentally friendly decision. We ensure this by using methods of production that save resources as well as by producing products which set new standards in terms of their consumption of electricity, water and detergent — and save you money at the same time.*

As directors and co-proprietors of the fourth generation of our business we promise you that this will not change.

Dr. Markus Miele

Dr. Reinhard Zinkann

* Please visit www.miele-sustainability.com for more information on our efforts and guiding principles.

Complete Series

Product Overview



	Complete C3 Brilliant	Complete C3 Marin	Complete C3 Kona
Exterior			
Color	Bronze Pearl	Marine Blue	Obsidian Black
Chrome Trim	•	•	•
Power			
Powerful Miele-Made Vortex Motor™	• (Silence)	• (Silence)	• (Silence)
Max. Power	1200W	1200W	1200W
Sound Insulation	•	•	•
On/Off Control	Foot Switch	Foot Switch	Foot Switch
Power Setting Control	+/- Handle Controls	+/- Foot Switch	+/- Foot Switch
Illuminated Controls Display	•	•	•
Automatic Power Setting	•	•	–
Number of Power Settings	6	6	6
SoftCarpet Setting	–	–	–
Safety Shut-off / Overheat Protection	•	•	•
Floorheads and Accessories			
Pure Suction Combination Floorhead (SBD)	SBD 285-3	Optional	Optional
Turbo Brush Floorhead (STB)	Optional	Optional	Optional
Electro Brush Floorhead (SEB)	SEB 236	SEB 236	SEB 228
Electro Brush Socket	•	•	•
Pure Suction Parquet Floorhead (SBB)	SBB 400-3	SBB 300-3	SBB 300-3
Suction Hose	SES 131 (Electro)	SES 121 (Electro)	SES 121 (Electro)
Telescopic Wand	SET 220 (Electro)	SET 220 (Electro)	SET 220 (Electro)
Integrated Accessories			
Dusting Brush	•	•	•
Upholstery Tool	•	•	•
Crevice Nozzle	•	•	•
Accessory Storage	Integrated	Integrated	Integrated
Flexible Crevice Tool (SFD 20)	–	–	–
Universal Brush (SUB 20)	–	–	–
Mini Turbo Brush (STB 101)	–	–	–
Bags & Filtration			
AirClean Sealed System®	•	•	•
AirClean 3D Efficiency FilterBag™	GN	GN	GN
FilterBag™ Change Indicator	•	•	•
AirClean Filter	Optional	Optional	Optional
Active AirClean Filter	Optional	Optional	Optional
HEPA AirClean Filter	HA 50	HA 50	HA 50
Filter Change Indicator	•	•	–
User conveniences			
Comfort Grip Handle	• (Deluxe)	•	•
Spotlight Handle	–	–	–
360° Swivel (Caster) Wheels	•	•	•
Operating Radius	36ft	36ft	36ft
Park-System	Double, Illuminated	Double	Double
Park Auto-off	•	•	•
Cable Rewind	Comfort One-Touch	Comfort One-Touch	Comfort One-Touch
Long Electrical Cord	23ft	23ft	23ft
Ergonomic Carrying Handle	•	•	•
Protective Bumper	• (Velvet)	•	•
MAP	\$1,499.00	\$1,099.00	\$899.00
List Price	\$1,599.00	\$1,249.00	\$999.00
Item Number	41GPE030USA	41GJE032USA	41GFE037USA

Complete Series

Product Overview



	Complete C3 SoftCarpet	Complete C3 Alize	Complete C3 Calima
Exterior			
Color	Tayberry Red	Petrol	Curry Yellow
Chrome Trim	•	•	•
Power			
Powerful Miele-Made Vortex Motor™	• (Silence)	• (Silence)	• (Silence)
Max. Power	1200W	1200W	1200W
Sound Insulation	•	•	•
On/Off Control	Foot Switch	Foot Switch	Foot Switch
Power Setting Control	+/- Foot Switch	+/- Foot Switch	+/- Foot Switch
Illuminated Controls Display	•	•	•
Automatic Power Setting	–	•	–
Number of Power Settings	6	6	6
SoftCarpet Setting	•	–	–
Safety Shut-off / Overheat Protection	•	•	•
Floorheads and Accessories			
Pure Suction Combination Floorhead (SBD)	Optional	SBD 285-3	Optional
Turbo Brush Floorhead (STB)	Optional	Optional	STB 305-3
Electro Brush Floorhead (SEB)	SEB 228 SC	Optional	Optional
Electro Brush Socket	•	•	•
Pure Suction Parquet Floorhead (SBB)	SBB 300-3	Optional	SBB 300-3
Suction Hose	SES 121 (Electro)	• (Two-Colored, Conical)	• (Two-Colored, Conical)
Telescopic Wand	SET 220 (Electro)	• (Comfort)	• (Comfort)
Integrated Accessories			
Dusting Brush	•	•	•
Upholstery Tool	•	•	•
Crevice Nozzle	•	•	•
Accessory Storage	Integrated	Integrated	Integrated
Flexible Crevice Tool (SFD 20)	–	–	–
Universal Brush (SUB 20)	–	–	–
Mini Turbo Brush (STB 101)	–	–	–
Bags & Filtration			
AirClean Sealed System®	•	•	•
AirClean 3D Efficiency FilterBag™	GN	GN	GN
FilterBag™ Change Indicator	•	•	•
AirClean Filter	Optional	Optional	Optional
Active AirClean Filter	Optional	Optional	Optional
HEPA AirClean Filter	HA 50	HA 50	HA 50
Filter Change Indicator	•	•	–
User conveniences			
Comfort Grip Handle	•	•	•
Spotlight Handle	–	•	–
360° Swivel (Caster) Wheels	•	• (DynamicDrive)	•
Operating Radius	36ft	36ft	36ft
Park-System	Double	Double	Double
Park Auto-off	•	•	•
Cable Rewind	Comfort One-Touch	Comfort One-Touch	Comfort One-Touch
Long Electrical Cord	23ft	23ft	23ft
Ergonomic Carrying Handle	•	•	•
Protective Bumper	•	•	•
MAP	\$949.00	\$699.00	\$699.00
List Price	\$1,049.00	\$799.00	\$799.00
Item Number	41GFE039USA	41GJE035USA	41GFE040USA

Compact Series

Product Overview



	Compact C2 Electro+	Compact C1 Turbo Team	Compact C1 Pure Suction
Exterior			
Color	Marine Blue	Obsidian Black	Lotus White
Color Trim	–	–	–
Power			
Powerful Miele-Made Vortex Motor™	• (Silence)	•	•
Max. Power	1200W	1200W	1200W
Sound Insulation	• (Silence Plus)	–	–
On/Off Control	Foot Switch	Foot Switch	Foot Switch
Power Setting Control	Rotary Dial	Rotary Dial	Rotary Dial
Illuminated Controls Display	–	–	–
Automatic Power Setting	–	–	–
Number of Power Settings	6	6	6
SoftCarpet Setting	–	–	–
Safety Shut-off / Overheat Protection	–	–	–
Floorheads and Accessories			
Pure Suction Combination Floorhead (SBD)	Optional	Optional	SBD 285-3
Turbo Brush Floorhead (STB)	Optional	STB 205-3	Optional
Electro Brush Floorhead (SEB)	SEB 228	–	–
Electro Brush Socket	•	–	–
Pure Suction Parquet Floorhead (SBB)	SBB Parquet-3	SBB Parquet-3	Optional
Suction Hose	SES 117 (Electro)	•	•
Telescopic Wand	SET 220 (Electro)	•	•
Integrated Accessories			
Dusting Brush	•	•	•
Upholstery Tool	•	•	•
Crevice Nozzle	•	•	•
Accessory Storage	VarioClip	VarioClip	VarioClip
Bags & Filtration			
AirClean Sealed System®	•	•	•
AirClean 3D Efficiency FilterBag™	FJM	FJM	FJM
FilterBag™ Change Indicator	•	•	•
AirClean Filter	Optional	SAC 20/30	SAC 20/30
Active AirClean Filter	Optional	Optional	Optional
HEPA AirClean Filter	HA 50	Optional	Optional
Filter Change Indicator	•	–	–
User conveniences			
Comfort Grip Handle	•	•	•
360° Swivel (Caster) Wheels	•	•	•
Operating Radius	33ft	29.5ft	29.5ft
Park-System	• (Lock Unit)	•	•
Park Auto-off	•	•	•
Cable Rewind	Comfort One-Touch	•	•
Long Electrical Cord	20ft	18ft	18ft
Ergonomic Carrying Handle	•	•	•
Protective Bumper	•	•	•
MAP	\$599.00	\$399.00	\$299.00
List Price	\$699.00	\$499.00	\$399.00
Item Number	41DCE035USA	41CAE034USA	41CAE035USA



Cat & Dog Series

Product Overview



	Complete C3 Cat & Dog	Blizzard CX1 Cat & Dog	Classic C1 Cat & Dog
Exterior			
Color	Lotus White	Lotus White	Lotus White
Chrome Trim	•	–	–
Power			
Powerful Miele-Made Vortex Motor™	• (Silence)	•	•
Max. Power	1200W	1200W	1200W
Bagless Vortex Air Flow Technology	–	•	–
Sound Insulation	•	•	•
On/Off Control	Foot Switch	Foot Switch	Foot Switch
Power Setting (Suction) Control	+/- Foot Switch	Rotary Dial	Rotary Dial
Illuminated Controls Display	•	–	–
Automatic Power Setting	–	–	–
Number of Power Settings	6	4	6
Safety Shut-off / Overheat Protection	•	•	•
Floorheads and Accessories			
Electro Brush Floorhead (SEB)	SEB 228	SEB 228	SEB 228
Electro Brush Socket	•	•	•
Turbo Brush Floorhead (STB)	Optional	Optional	Optional
Pure Suction Combination Floorhead (SBD)	Optional	Optional	Optional
Pure Suction Parquet Floorhead (SBB)	SBB 300-3	SBB 300-3	SBB Parquet-3
Suction Hose	SES 121 (Electro) (Two-Colored)	SES 121 (Electro) (Two-Colored)	SES 116 (Electro)
Telescopic Wand	SET 220 (Electro)	SET 220 (Electro)	SET 220 (Electro)
Integrated Accessories			
Dusting Brush	•	•	•
Upholstery Tool	•	•	•
Crevice Nozzle	•	•	•
Accessory Storage	Integrated	Integrated	VarioClip
Additional Accessories			
Flexible Crevice Tool (SFD 20)	–	–	–
Universal Brush (SUB 20)	–	–	–
Flexible Handheld Mini Turbo Brush	STB 101	STB 101	STB 20
Bags & Filtration			
AirClean Sealed System®	•	–	–
AirClean 3D Efficiency FilterBag™	GN	–	GN
Bagless System	–	•	–
FilterBag™ Change Indicator	•	–	•
AirClean Filter	Optional	–	Optional
Active AirClean Filter	AA 50	–	AA 30
HEPA AirClean Filter	Optional	–	Optional
HEPA Lifetime Filter	–	•	–
ComfortClean	–	•	–
Filter Change Indicator	–	–	–
User conveniences			
Handle Type	Comfort Grip	Electro	Comfort Grip
LED Headlight	–	–	–
360° Swivel (Caster) Wheels	•	•	•
Auto Height Adjustment	–	–	–
SwivelNeck™	–	–	–
Anti-tipping Device	–	–	–
Operating Radius	36ft	33ft	29.5ft
Park-System	Double	•	•
Park Auto-off	•	–	•
Cable Rewind	Comfort One-Touch	Comfort One-Touch	•
Long Electrical Cord	23ft	20ft	18ft
Quick Release Cable Hook	–	–	–
Ergonomic Carrying Handle	•	•	•
Protective Bumper	•	–	•
MAP	\$999.00	\$899.00	\$699.00
List Price	\$1,099.00	\$999.00	\$799.00
Item Number	41GEE034USA	41KCE043USA	41BBN031USA

Cat & Dog Series

Product Overview



	Dynamic U1 Cat & Dog
Exterior	
Color	Lotus White
Chrome Trim	–
Power	
Powerful Miele-Made Vortex Motor™	•
Max. Power	1200W
Bagless Vortex Air Flow Technology	–
Sound Insulation	•
On/Off Control	Handle Control
Power Setting (Suction) Control	Rotary Dial
Illuminated Controls Display	–
Automatic Power Setting	–
Number of Power Settings	4
Safety Shut-off / Overheat Protection	•
Floorheads and Accessories	
Electro Brush Floorhead (SEB)	Electro Plus
Electro Brush Socket	–
Turbo Brush Floorhead (STB)	–
Pure Suction Combination Floorhead (SBD)	–
Pure Suction Parquet Floorhead (SBB)	–
Suction Hose	•
Telescopic Wand	•
Integrated Accessories	
Dusting Brush	•
Upholstery Tool	•
Crevice Nozzle	•
Accessory Storage	Integrated
Additional Accessories	
Flexible Crevice Tool (SFD 20)	–
Universal Brush (SUB 20)	–
Flexible Handheld Mini Turbo Brush	STB 101
Bags & Filtration	
AirClean Sealed System®	•
AirClean 3D Efficiency FilterBag™	U
Bagless System	–
FilterBag™ Change Indicator	•
AirClean Filter	–
Active AirClean Filter	AA 30
HEPA AirClean Filter	Optional
HEPA Lifetime Filter	–
ComfortClean	–
Filter Change Indicator	•
User conveniences	
Handle Type	Comfort Grip
LED Headlight	•
360° Swivel (Caster) Wheels	•
Auto Height Adjustment	•
SwivelNeck™	•
Anti-tipping Device	•
Operating Radius	54ft
Park-System	–
Park Auto-off	•
Cable Rewind	–
Long Electrical Cord	39ft
Quick Release Cable Hook	•
Ergonomic Carrying Handle	•
Protective Bumper	–
MAP	\$649.00
List Price	\$749.00
Item Number	41HBE030USA

Blizzard CX1

Product Overview



	Blizzard CX1 Electro+	Blizzard CX1 Turbo Team	Blizzard CX1 Pure Suction
Exterior			
Color	Obsidian Black	Tech Blue	Graphite Grey
Power			
Powerful Miele-Made Vortex Motor™	•	•	•
Max. Power	1200W	1200W	1200W
Bagless Vortex Air Flow Technology	•	•	•
Sound Insulation	•	•	•
On/Off Control	Foot Switch	Foot Switch	Foot Switch
Power Setting (Suction) Control	Rotary Dial	Rotary Dial	Rotary Dial
Number of Power Settings	4	4	4
Safety Shut-off / Overheat Protection	•	•	•
Floorheads and Accessories			
Electro Brush Floorhead (SEB)	SEB 228	–	–
Electro Brush Socket	•	–	–
Turbo Brush Floorhead (STB)	Optional	STB 305-3	Optional
Pure Suction Combination Floorhead (SBD)	Optional	Optional	SBD 285-3
Pure Suction Parquet Floorhead (SBB)	SBB 300-3	SBB 300-3	SBB 300-3
Suction Hose	SES 121 (Two-Colored, Electro)	• (Two-Colored, Conical)	• (Two-Colored, Conical)
Telescopic Wand	SET 220 (Electro)	• (Comfort)	• (Comfort)
Integrated Accessories			
Dusting Brush	•	•	•
Upholstery Tool	•	•	•
Crevice Nozzle	•	•	•
Accessory Storage	Integrated	Integrated	Integrated
Filtration			
Bagless System	•	•	•
Hygiene Lifetime Filter	–	–	•
HEPA Lifetime Filter	•	•	–
ComfortClean	•	•	•
User conveniences			
Grip / Handle	• (Electro)	• (Comfort)	• (Comfort)
360° Swivel (Caster) Wheels	•	• (DynamicDrive)	•
Operating Radius	33ft	33ft	33ft
Park-System	•	•	•
Cable Rewind	Comfort One-Touch	Comfort One-Touch	Comfort One-Touch
Long Electrical Cord	20ft	20ft	20ft
Ergonomic Carrying Handle	•	•	•
MAP	\$799.00	\$599.00	\$499.00
List Price	\$899.00	\$699.00	\$599.00
Item Number	41KCE041USA	41KCE042USA	41KRE030USA



HomeCare Series

Product Overview



	Complete C3 HomeCare+	Blizzard CX1 HomeCare	Complete C3 HomeCare + SEB 236
Exterior			
Color	Autumn Red	Autumn Red	Autumn Red
Chrome Trim	•	–	•
Power			
Powerful Miele-Made Vortex Motor™	• (Silence)	•	• (Silence)
Max. Power	1200W	1200W	1200W
Bagless Vortex Air Flow Technology	–	•	–
Sound Insulation	•	•	•
On/Off Control	Foot Switch	Foot Switch	Foot Switch
Power Setting Control	+/- Handle Controls	Rotary Dial	+/- Foot Switch
Illuminated Controls Display	•	–	•
Automatic Power Setting	•	–	–
Number of Power Settings	6	6	6
Safety Shut-off / Overheat Protection	•	•	•
Floorheads and Accessories			
Pure Suction Combination Floorhead (SBD)	SBD 285-3	Optional	SBD 285-3
Turbo Brush Floorhead (STB)	Optional	Optional	Optional
Electro Brush Floorhead (SEB)	SEB 236	SEB 236	SEB 236
Electro Brush Socket	•	•	•
Pure Suction Parquet Floorhead (SBB)	Optional	SBB 400-3	Optional
Suction Hose	SES 131 (Electro)	SES 121 (Two-Colored, Electro)	SES 121 (Electro)
Telescopic Wand	SET 220 (Electro)	SET 220 (Electro)	SET 220 (Electro)
Integrated Accessories			
Dusting Brush	•	•	•
Upholstery Tool	•	•	•
Crevice Nozzle	•	•	•
Accessory Storage	Integrated	Integrated	Integrated
Flexible Crevice Tool (SFD 20)	•	•	•
Universal Brush (SUB 20)	•	•	•
Bags & Filtration			
AirClean Sealed System®	•	–	•
AirClean 3D Efficiency FilterBag™	GN	–	GN
Bagless System	–	•	–
FilterBag™ Change Indicator	•	–	•
AirClean Filter	Optional	–	Optional
Active AirClean Filter	Optional	–	Optional
HEPA AirClean Filter	HA 50	–	HA 50
HEPA Lifetime Filter	–	•	–
ComfortClean	–	•	–
Filter Change Indicator	•	–	–
User conveniences			
Comfort Grip Handle	• (Deluxe)	• (Electro)	• (Deluxe)
LED Headlight	•	•	•
360° Swivel (Caster) Wheels	•	•	•
Auto Height Adjustment	–	–	–
SwivelNeck™	–	–	–
Anti-tipping Device	–	–	–
Operating Radius	36ft	33ft	36ft
Park-System	Double	•	Double
Park Auto-Off	•	–	•
Cable Rewind	Comfort One-Touch	Comfort One-Touch	Comfort One-Touch
Long Electrical Cord	23ft	20ft	23ft
Quick Release Cable Hook	–	–	–
Ergonomic Carrying Handle	•	•	•
Protective Bumper	•	–	•
List Price	\$1,499.00	\$1,049.00	\$1,099.00
Item Number	41GPE031USA	41KCE044USA	41GFE038USA

HomeCare Series

Product Overview



	Complete C3 HomeCare + SEB 228	Complete C3 HomeCare + SEB 217	Classic C1 HomeCare
Exterior			
Color	Autumn Red	Autumn Red	Autumn Red
Chrome Trim	•	•	–
Power			
Powerful Miele-Made Vortex Motor™	• (Silence)	• (Silence)	•
Max. Power	1200W	1200W	1200W
Bagless Vortex Air Flow Technology	–	–	–
Sound Insulation	•	•	•
On/Off Control	Foot Switch	Foot Switch	Foot Switch
Power Setting Control	+/- Handle Controls	+/- Foot Switch	Rotary Dial
Illuminated Controls Display	•	•	–
Automatic Power Setting	–	–	–
Number of Power Settings	6	6	6
Safety Shut-off / Overheat Protection	•	•	•
Floorheads and Accessories			
Pure Suction Combination Floorhead (SBD)	SBD 285-3	SBD 285-3	SBD 285-3
Turbo Brush Floorhead (STB)	Optional	Optional	Optional
Electro Brush Floorhead (SEB)	SEB 228	SEB 217	SEB 228
Electro Brush Socket	•	•	•
Pure Suction Parquet Floorhead (SBB)	Optional	Optional	Optional
Suction Hose	SES 121 (Electro)	SES 121 (Electro)	SES 116 (Electro)
Telescopic Wand	SET 220 (Electro)	SET 220 (Electro)	SET 220 (Electro)
Integrated Accessories			
Dusting Brush	•	•	•
Upholstery Tool	•	•	•
Crevice Nozzle	•	•	•
Accessory Storage	Integrated	Integrated	VarioClip
Flexible Crevice Tool (SFD 20)	•	•	–
Universal Brush (SUB 20)	•	•	–
Bags & Filtration			
AirClean Sealed System®	•	•	–
AirClean 3D Efficiency FilterBag™	GN	GN	GN
Bagless System	–	–	–
FilterBag™ Change Indicator	•	•	•
AirClean Filter	Optional	Optional	SAC 20/30
Active AirClean Filter	Optional	Optional	Optional
HEPA AirClean Filter	HA 50	HA 50	HA 30
HEPA Lifetime Filter	–	–	–
ComfortClean	–	–	–
Filter Change Indicator	–	–	•
User conveniences			
Comfort Grip Handle	• (Deluxe)	• (Deluxe)	•
LED Headlight	–	–	–
360° Swivel (Caster) Wheels	•	•	•
Auto Height Adjustment	–	–	–
SwivelNeck™	–	–	–
Anti-tipping Device	–	–	–
Operating Radius	36ft	36ft	29.5ft
Park-System	Double	Double	Double
Park Auto-Off	•	•	•
Cable Rewind	Comfort One-Touch	Comfort One-Touch	•
Long Electrical Cord	23ft	23ft	18ft
Quick Release Cable Hook	–	–	–
Ergonomic Carrying Handle	•	•	•
Protective Bumper	•	•	•
List Price	\$1,049.00	\$999.00	\$749.00
Item Number	41GFE038USA	41GFE038USA	41BCN032USA

HomeCare Series

Product Overview



	Compact C1 HomeCare	Dynamic U1 HomeCare
Exterior		
Color	Autumn Red	Autumn Red
Chrome Trim	–	–
Power		
Powerful Miele-Made Vortex Motor™	•	•
Max. Power	1200W	1200W
Bagless Vortex Air Flow Technology	–	–
Sound Insulation	–	•
On/Off Control	Foot Switch	Handle Control
Power Setting Control	Rotary Dial	Rotary Dial
Illuminated Controls Display	–	–
Automatic Power Setting	–	–
Number of Power Settings	6	4
Safety Shut-off / Overheat Protection	•	•
Floorheads and Accessories		
Pure Suction Combination Floorhead (SBD)	SBD 285-3	–
Turbo Brush Floorhead (STB)	SBD 205-3	–
Electro Brush Floorhead (SEB)	–	Power Plus
Electro Brush Socket	–	–
Pure Suction Parquet Floorhead (SBB)	Optional	–
Suction Hose	•	•
Telescopic Wand	•	•
Integrated Accessories		
Dusting Brush	•	•
Upholstery Tool	•	•
Crevice Nozzle	•	•
Accessory Storage	VarioClip	Integrated
Flexible Crevice Tool (SFD 20)	–	–
Universal Brush (SUB 20)	–	–
Bags & Filtration		
AirClean Sealed System®	•	•
AirClean 3D Efficiency FilterBag™	GN	U
Bagless System	–	–
FilterBag™ Change Indicator	•	•
AirClean Filter	SAC 20/30	Optional
Active AirClean Filter	Optional	Optional
HEPA AirClean Filter	Optional	HA 30
HEPA Lifetime Filter	–	–
ComfortClean	–	–
Filter Change Indicator	–	–
User Conveniences		
Comfort Grip Handle	•	•
LED Headlight	–	•
360° Swivel (Caster) Wheels	•	•
Auto Height Adjustment	–	•
SwivelNeck™	–	•
Anti-tipping Device	–	•
Operating Radius	29.5ft	54ft
Park-System	Double	–
Park Auto-Off	•	•
Cable Rewind	•	Quick Release Cord Hook
Long Electrical Cord	18ft	39ft
Quick Release Cable Hook	–	•
Ergonomic Carrying Handle	•	•
Protective Bumper	•	–
List Price	\$549.00	\$669.00
Item Number	41CAE032USA	41HJE031USA



Dynamic U1 Series

Product Overview



	Dynamic U1 Fresh Air	Dynamic U1 Maverick
Exterior		
Color	Autumn Red	Obsidian Black
Power		
Powerful Miele-Made Vortex Motor™	•	•
Max. Power	1200W	1200W
Sound Insulation	•	•
On/Off Control	Handle Control	Handle Control
Number of Power Settings	4	4
Power Setting Control	Rotary Control	Rotary Control
Safety Shut-off / Overheat Protection	•	•
Floorheads and Accessories		
Pure Suction Combination Floorhead (SBD)	–	–
Turbo Brush Floorhead (STB)	–	–
Electro Brush Floorhead (SEB)	Power Plus	Power Plus
Pure Suction Parquet Floorhead (SBB)	–	–
Suction Hose	•	•
Telescopic Wand	•	•
Integrated Accessories		
Dusting Brush	•	•
Upholstery Tool	•	•
Crevice Nozzle	•	•
Accessory Storage	Integrated	Integrated
Bags & Filtration		
AirClean Sealed System®	•	•
AirClean 3D Efficiency FilterBag™	U	U
FilterBag™ Change Indicator	•	•
AirClean Filter	–	•
Active AirClean Filter	Optional	Optional
HEPA AirClean Filter	HA 30	Optional
Filter Change Indicator	•	•
User conveniences		
Comfort Grip Handle	•	•
LED Headlight	•	–
360° Swivel Castor Wheels	•	•
Auto Height Adjustment	•	•
SwivelNeck™	•	•
Anti-tipping Device	•	•
Operating Radius	54ft	54ft
Park Auto-off	•	•
Long Electrical Cord	39ft	39ft
Quick Release Cable Hook	•	•
Ergonomic Carrying Handle	•	•
MAP	\$599.00	\$499.00
List Price	\$699.00	\$599.00
Item Number	41HCE033USA	41HAE032USA

Swing H1 Series

Product Overview



	Swing H1 Tactical
Exterior	
Color	Obsidian Black
Power	
Powerful Miele-Made Vortex Motor™	•
Max. Power	1,000W
Sound Insulation	•
Power Settings	Min/Max
Power Setting Control	Min/Max Handle Control
Safety Shut-Off / Overheat Protection	•
Floorheads and Accessories	
Pure Suction Combination Floorhead (SBD)	SBD 285-3
Turbo Brush Floorhead (STB)	Optional
Electro Brush Floorhead (SEB)	Optional
Electro Brush Socket	•
Straight Suction Parquet Floorhead (SBB)	Optional
Telescopic Wand	• (Height Adjustable)
Integrated Accessories	
Upholstery Tool	•
Crevice Nozzle	•
Accessory Storage	Accessory Clip
Bags & Filtration	
AirClean 3D Efficiency FilterBag™	KK
FilterBag™ Change Indicator	•
AirClean Filter	SAC 10
Active AirClean Filter	Optional
HEPA AirClean Filter	Optional
User conveniences	
Ergonomic Handle	•
Anti-slip Stopper	•
Operating Radius	29.5ft
Quick Release Cable Hook	•
MAP	\$269.00
List Price	\$299.00
Item Number	41AA0035USA

Robot Vacuum Cleaner

Product Overview



	Scout RX2 Home Vision	Scout RX2
Exterior		
Color	Graphite Grey Pearl Finish	Autumn Red
System		
Quatro Cleaning System	•	•
Retractable Corner Brushes	2	2
Rotary Brush	•	•
Front Suction	•	•
Rear Brushless Motor	•	•
3D Smart Navigation System	•	•
Digital Ceiling Camera	2	2
Gyro Sensor	•	•
Anti-Collision Sensors	7	7
Anti-Fall Sensors	3	3
Number of Modes	4	4
Auto	•	•
Spot	• (6x6ft area)	• (6x6ft area)
Corner	•	•
Turbo	•	•
Silence	Manual	Manual
Furniture Protection Technology	•	•
Timer	• (7 Programs)	• (7 Programs)
Operation		
Touch User Interface	•	•
Remote Control	•	•
Mobile Control (Smartphone App)	•	•
Miele@home	•	•
WiFiConn@ct	•	•
MobilControl	•	•
Home Mapping	•	•
Home Vision	•	–
Max Carpet Climb Height	0.7 in	0.7 in
Rechargeable Battery	2,200 mAh Li-ion	2,200 mAh Li-ion
Recharge Time	170 min	150 min
Cleaning Area	1,600 sq ft	860 sq ft
Operating Time	120 min	60 min
Dustbox & Filtration		
Dustbox Volume	0.5 L	0.5 L
AirClean Filter	AirClean Plus	AirClean Plus
Accessories		
Base Charging Station with Adapter	•	•
Area Demarcation	Magnetic Tape (3.1ft)	Magnetic Tape (3.1ft)
Sealing Lip	•	•
Chevron Style Brush Roll	•	•
Side Brushes	2	2
Side Brush Dust Strippers	2	2
Replacement Filters	2	2
MAP	\$1,049.00	\$849.00
List Price	\$1,149.00	\$949.00
Item Number	41LQL030USA	41LQL000USA



Combination Floorheads

For Hard Surfaces and Low-Pile Carpet





AllTeQ Combination Floorhead SBD 285-3

- Extendable and retractable bristle strip for use when needed
- Double swivel joint and metal soleplate for easy gliding across surfaces
- Rubberized wheels to prevent scratches on hard floor

Item #07253830

MAP: \$69.00

List Price: \$79.00

Pure Suction Floorheads

For Hard Surfaces Only





Parquet Twister XL Floorhead SBB 400-3

- At 16" wide, large areas of flooring can be vacuumed in a short amount of time
- Includes a flexible double-swivel joint along with soft, natural bristles which glide smoothly over floors

Item #07101160
MAP: \$79.00
List Price: \$89.00



Parquet Twister Floorhead SBB 300-3

- Features a double-swivel joint which rotates 180 degrees, for quick and easy vacuuming around furniture and obstacles
- Soft, natural bristles allow for easy gliding along smooth surfaces

Item #07155710
MAP: \$69.00
List Price: \$79.00

Turbo Brush Floorheads

For Short-Pile Carpet





Turbo Comfort Floorhead STB 205-3

- Directly powered by the air stream, a rotating roller brush works to loosen dirt in the floor while also collecting hair and threads
- Includes an air adjustment slide that prevents carpet from being sucked into the vacuum cleaner

Item #07250040
MAP: \$109.00
List Price: \$129.00



TurboTeQ Floorhead STB 305-3

- For easy and thorough cleaning of short pile carpets
- Does not stick to carpets thanks to the air valve
- No separate connection, powered by current of air

Item #10455360
MAP: \$119.00
List Price: \$139.00



Electro Brush Floorheads

For Deep-Pile And Dense Carpets



Electro Premium Floorhead SEB 236

- Motor-driven with five-level height adjustment to adjust to different carpet pile depths
- Swivel neck function for extreme maneuverability
- Features an electrical beater bar for removing deep, persistent soil embedded in your carpet
- Integrated LED lighting

Item #07311290
MAP: \$259.00
List Price: \$285.00



Electro Plus Floorhead SEB 228

- Motor-driven with 14" wide brush roll
- Five-level height adjustment allowing for quick, intensive cleaning of all carpet types
- Swivel neck function for extreme maneuverability
- Features an electrical beater bar for removing deep, persistent soil embedded in your carpet

Item #07359280
MAP: \$209.00
List Price: \$219.00



Electro Comfort Floorhead SEB 217-3

- Motor-driven with 10.5" wide brush roll
- Swivel neck function for extreme maneuverability
- Features an electrical beater bar for removing deep, persistent soil embedded in your carpet

Item #07250160
MAP: \$150.00
List Price: \$160.00

Additional Accessories





Handheld Mini Turbobrush STB 101

- Powered directly by air stream
- Air adjustment slide for adjusting to different surfaces
- 6" suction inlet with beater bar for fast and efficient removal of hair

Item #07252850
MAP: \$75.00
List Price: \$85.00



Dusting Brush SSP 10

- Features soft, natural bristles to clean delicate surfaces
- An adjustable swivel joint and soft bumper strip allow for easy maneuvering along furniture

Item #07132710
MAP: \$19.95
List Price: \$19.95



Extended Flexible Crevice Tool SFD 20

- Easily reach around furniture and appliances
- Impressive length of 22" with flexible central section
- Fits directly onto the handle of Miele canister vacuum cleaners

Item #07252100
MAP: \$29.95
List Price: \$29.95



Handheld Flexible Mini Turbobrush STB 20

- Includes streamlined turbine with powerful suction
- For effortless removal of fluff and hair from furnishings or car seats
- Features a swivel joint and reinforced edge for removal of stubborn dust and hair

Item #07805350
MAP: \$65.00
List Price: \$75.00



Extended Crevice Tool SFD 10

- Excellently suited for cleaning narrow crevices and gaps
- At 12" long, clean behind beds and between car seats with ease
- Fits directly onto the handle of Miele canister vacuum cleaners

Item #07250050
MAP: \$25.95
List Price: \$25.95



Flexible Hose Extension SFS 10

- Provides an additional five feet to the overall cleaning radius while vacuuming
- Fits in between the vacuum handle and suction wand
- Practical storage in the hose sleeve after done vacuuming

*May only be used with non-electrical hose and wand

Item #07252210
MAP: \$39.95
List Price: \$39.95



Radiator Brush SHB 30

- Durable yet gentle, made from strong and robust synthetic bristles
- Clean difficult-to-reach areas with ease such as radiators, vents, refrigerator coils and air conditioners

Item #09660490
MAP: \$25.95
List Price: \$25.95



Mattress Tool SMD 10

- For cleaning gaps between bed frames, mattresses and sofa cushions
- Features a thread catcher on its underside for easy removal of hair and debris

Item #07252280
MAP: \$25.95
List Price: \$25.95



Wide Upholstery Tool SPD 10

- Extra wide suction nozzle for efficient cleaning of stubborn pet hair, lint and dirt from upholstery and curtains
- Features a wide thread catcher for removal of thread and hair
- Nozzle is adjustable for flexibility

Item #07252190
MAP: \$29.95
List Price: \$29.95



Hygiene Cap SHV 10

- For the separate storage of the vacuum and hose
- This unique cap works with charcoal to neutralize unpleasant odors when the hose is removed from the vacuum
- Easily attached to the suction hose with practical clip connection

*Replacement should occur on a yearly basis.

Item #06622030
MAP: \$9.95
List Price: \$9.95



Adjustable Universal Brush SUB 20

- Features soft, natural bristles and swivel neck
- Perfect for dusting bookshelves, mantles, moldings, ceiling fans and sculptures
- Includes soft bumper strip to prevent scratches to furniture
- Fits directly onto the handle of Miele canister vacuum cleaners

Item #07475870
MAP: \$39.95
List Price: \$39.95



Spotlight Handle SGC 20

- The single touch of a button prompts the LED lighting in the vacuum handle
- For practical illumination of areas that need to be cleaned
- Nothing will go unnoticed while vacuuming in dark closets or spaces

Item #09385930
MAP: \$99.95
List Price: \$109.95



Robot Vacuum Accessories





Magnetic Strips RX-MB 4

- Defines the areas that you would not like vacuumed
- Can be placed temporarily or permanently to block off rooms or flooring
- The Scout Robot comes equipped with four, 3-foot magnetic strips

Item #09782660
MAP: \$29.95
List Price: \$34.95



AirClean Plus Filter RX2-AP

- Effective filtration of dust particles
- 2-stage filter system safely seals in dust
- To maintain machine performance, change twice a year

Item #10592080
MAP: \$19.99
List Price: \$24.99



Side Brushes RX2-SB

- For thorough cleaning along edges and in corners
- With premium, robust synthetic bristles
- For cleaning hard floors and carpets

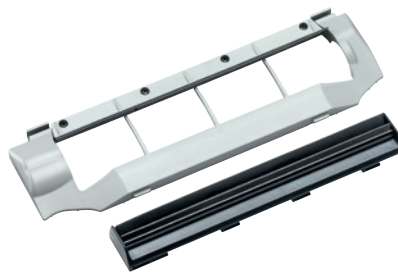
Item #10592090
MAP: \$19.99
List Price: \$24.99



Beater Bar RX2-BW

- Rotates to remove stubborn soiling
- With premium, robust synthetic bristles
- For cleaning hard floors and carpets

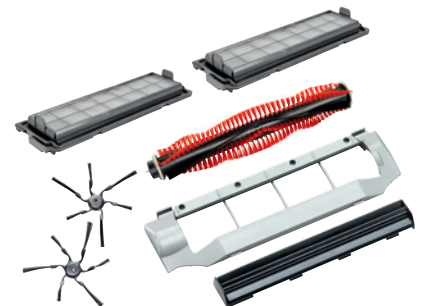
Item #10592110
MAP: \$29.99
List Price: \$34.99



Sealing Lip Set RX2-DL

- For effective and reliable dust pick-up
- For cleaning hard floors and carpets

Item #10592100
MAP: \$29.99
List Price: \$34.99



Accessories Pack RX2-A

- Covers annual accessory needs with a single purchase at a discounted price
- Includes: 2 AirClean Plus Filters, 1 Right Side Brush, 1 Left Side Brush, 1 Sealing Lip Set, 1 Beater Bar

Item #10808470
MAP: \$89.99
List Price: \$99.99

Accessory Sets





MicroSet Accessory Case SMC 20

- Includes a Micro Hose with combination nozzle, Micro Dusting Brush, Micro Crevice Tool and Extension piece
- Ideal for cleaning small crevices and gaps, especially for delicate objects around the home

Item #09060360

MAP: \$75.00

List Price: \$85.00





Original Miele FilterBags™

Compatibility With Miele Vacuum Cleaners



Type	AirClean 3D Efficiency FJM	AirClean 3D Efficiency GN	AirClean 3D Efficiency U	AirClean KK
Contents	4 Bags + 2 Filters	4 Bags + 2 Filters	4 Bags + 2 Filters	5 Bags + 2 Filters
Color of Dustbag Collar:	Red	Blue	Green	Yellow
Complete C3 S 8000 - S 8999		•		
Complete C2 S 5000 - S 5999		•		
Complete C1 S 700 - S 799	•			
Compact C2 S 6000 - S 6999	•			
Compact C1 S 4000 - S 4999	•			
Classic C1 S 2120 - S 2180		•		
Dynamic U1 S 7510 - S 7580			•	
Swing H1 S 140 - S 195				•
S 600 - S 658		•		
S 500 - S 558	•			
S 400 - S 456 i		•		
S 300 i - S 381	•			
S 246 i - S 256 i	•			
Item Number	10123220	10123210	10123230	10123240
MAP	\$18.95	\$18.95	\$18.95	\$18.95
List Price	\$20.95	\$20.85	\$20.85	\$20.85

Original Miele FilterBags™

Compatibility With Miele Vacuum Cleaners



Type	AirClean 3D Efficiency FJM Performance Pack		AirClean 3D Efficiency GN Performance Pack		AirClean 3D Efficiency U Performance Pack
Contents	16 Bags + 4 Pre-Motor Filters +HA 50		16 Bags + 4 Pre-Motor Filters + HA 30 or HA 50		16 Bags + 4 Pre-Motor Filters + HA 30 or HA 50
Color of Dustbag Collar:	Red		Blue		Green
			HA 30	HA 50	
Complete C3 S 8000 - S 8999					•
Complete C2 S 5000 - S 5999					•
Complete C1 S 700 - S 799	•				
Compact C2 S 6000 - S 6999	•				
Compact C1 S 4000 - S 4999	•				
Classic C1 S 2120 - S 2180			•		
Dynamic U1 S 7510 - S 7580					•
Swing H1 S 140 - S 195					
S 600 - S 658			•		
S 500 - S 558	•				
S 400 - S 456 i			•		
S 300 i - S 381	•				
S 246 i - S 256 i	•				
Item Number	10512520		10512510	10512500	10512530
MAP	\$99.95		\$99.95	\$99.95	\$99.95
List Price	\$139.95		\$139.95	\$139.95	\$139.95

Original Miele FilterBags™

Compatibility With Miele Vacuum Cleaners



	HEPA AirClean Filters		Active AirClean Filters		AirClean Filters	HEPA AirClean Filters	Active Air Clean Filters
Type	SF-HA 50	SF- HA 30	SF-AA 50	SF-AA 30	SF- SAC 20/30	SF- H 10	SF-AA 10
Complete C3 S 8000 - S 8999	•		•		•		
Complete C2 S 5000 - S 5999	•		•		•		
Complete C1 S 700 - S 799		•		•	•		
Compact C2 S 6000 - S 6999	•		•		•		
Compact C1 S 4000 - S 4999	•		•		•		
Classic C1 S 2120 - S 2180		•		•	•		
Dynamic U1 S 7510 - S 7580		•		•	•		
Swing H1 S 140 - S 195						•	•
S 600 - S 658		•		•	•		
S 500 - S 558		•		•	•		
S 400 - S 456 i		•		•	•		
S 300 i - S 381		•		•	•		
Item Number	09616280	09616270	09616110	09616080	03944711	09884650	07496330
MAP	\$49.95	\$49.95	\$39.95	\$49.95	\$11.95	\$49.95	\$39.95
List Price	\$58.95	\$58.95	\$44.95	\$58.95	\$13.95	\$58.95	\$44.95



Countertop Coffee Machines

Product Overview



Model	CM 6150	CM 6350
Construction Type		
Countertop Bean-to-Cup Coffee Machine	•	•
Design		
Control Panel	DirectSensor	DirectSensor
Beverage Specialties		
Espresso / Coffee / Long Coffee/ Ristretto	•/•/•/•	•/•/•/•
Cappuccino / Latte Macchiato/ Cafe Latte	•/•/•	•/•/•
Hot Water / Hot Milk/ Milk Froth	–/•/•	•/•/•
Consumer Benefits		
OneTouch / OneTouch for Two Preparation	•/•	•/•
Flavor Preserving Conical Grinding Unit	•	•
Second Type of Coffee Possible Using Ground Coffee	•	•
Programmable User Profiles	4	4
Grinding Grade Adjustable / Grinding Grade Programmable	•/•	•/•
Water Quantity / Water Temperature Programmable	•/•	•/•
Pre-Brewing / Milk Quantity / Milk Froth Quantity Programmable	•/•/•	•/•/•
Coffee Pot Function	•	•
User Convenience		
Individual Language Selection	•	•
Height Adjustable Central Spout	3.15" - 5.51"	3.15" - 5.51"
Integrated Cup Warmer	–	•
BrilliantLight	–	•
Capacity of Coffee Bean Container	10.58 oz	10.58 oz
Capacity of Waste Container	10 portions	10 portions
Capacity of Water Container	61 oz	61 oz
Switch-On Time Programmable / Switch-Off Time Programmable	•/•	•/•
Standby Time Programmable / Time Buffer in H	•/–	•/–
Cleaning Convenience		
Convenient Cleaning Program / ComfortClean	•/•	•/•
Automatic Rinsing of the Milk Pipework From the Water Container	•	•
Removable Milk Pipework / Brew Unit	•/•	•/•
Safety		
System Lock	•	•
Technical Data		
Appliance Dimensions (W x H x D)	10" x 14 1/8" x 16 3/4"	10" x 14 1/8" x 16 3/4"
Electrical Requirements	120 V, 60 Hz, 15 Amps	120 V, 60 Hz, 15 Amps
Plug Type	NEMA 5 - 15 P	NEMA 5 - 15 P
Standard accessories		
Glass / Stainless Steel Milk Flask	–/–	–/•
Descaling Agent / Cleaning Tablets	•/•	•/•
UMRP & MAP / Retail pricing	\$1,749 / \$1,849	\$2,249 / \$2,349
Item Number		
Lotus White	29615010USA	29635010USA
Obsidian Black	29615020USA	29635020USA
Graphite Grey	–	29635030USA

Coffee Accessories

Product Overview



Stainless Steel Milk Flask MB-CM

- Used in preparing hot milk and milk froth for specialty beverages
- Store in the refrigerator to keep milk cool and fresh
- Standard with CM 6350 Countertop Coffee Machines

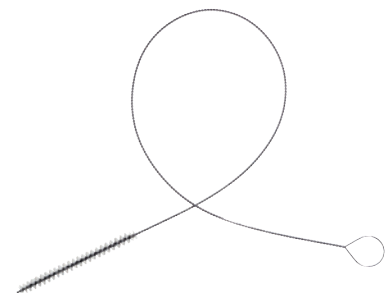
Item #07953690
MAP: \$49.00
List Price: \$49.00



Stainless Steel Coffee Pot CJ 1

- Make and store up to 8 servings of coffee
- Insulated stainless steel for keeping coffee and tea hot

Item #10694310
MAP: \$119.00
List Price: \$119.00



Cleaning Brush for Milk Pipework

- Note: Milk Pipework is automatically rinsed after each coffee drink is brewed
- This tool allows for manual cleaning to ensure the best hygiene of your machine

Item #07331640
MAP: \$9.00
List Price: \$9.00

Rotary Ironer

Product Overview



Model	B 990
Design	
Appliance Color	Lotus White
Perfect Ironing Results	
Temperature Selection to Suit Textiles	•
High Contact Pressure (N/cm²)	0.35
Laundry Feed Board for Easy Laundry Feed	•
Convenient Infeed Board with Ample Storage Space	•
Airing Bar for Crease-Free Cooling	•
Time-Saving Ironing	
Roller Length	32 13/4"
Variable Roller Speed	•
Moisture-Absorbing Roller Padding	•
User Convenience	
Effortless Ironing While Seated Possible	•
Free, Unsupported Roller End	•
Clear Controls	•
Wide Foot Control Bar	•
Convenient Folding Mechanism	•
Easily Maneuverable Thanks to Four Casters	•
Safety	
Automatic Finger Guard	•
Emergency Release	•
Good Stability	•
Technical Data	
Dimensions (W x H x D)	39 3/8" x 37" x 16 3/8"
Dimensions When Folded Away (W x H x D)	19 9/16" x 41 1/2" x 15"
Total Connected Load in kW	2.9
Fuse Rating	13 A
Weight	83.8 lbs
Roller Speed	2 — 4.5 m/min
Item Number	
White	13099035USA
UMRP & MAP / Retail Pricing	\$2,049 / \$2,249

Rotary Ironer (commercial-grade)

Product Overview



Model	HM 16- 80 D
Performance Data	
Roller Diameter	6"
Roller Width	32.5"
At 20% Residual Moisture (according to DIN 11902) (yards/n)	14
Controls/Programs	
Clear, Concise and Simple Controls	•
5-Stage Speed Control (ft/min)	6.5 - 15
Individually Adjustable Roller Speed (rpm)	4 - 9
Freely Selectable Temperatures for a Wide Variety of Textiles	•
Features	
Convenient Footswitch Control	•
Temperature Limiter	•
Return Feed	•
Roller Bearings on Both Sides	–
Padding: Polyester Needle Felt with ARAMID Needle Felt Cloth	•
Aluminum Trough	•
Finger Guard	•
Manual Heater Plate Release in Event of Power Failure	•
Heater Indicator Lamp	•
Chrome-Plated Airing Bar for Crease-Free Laundry Cooldown and Airing	•
Rapid Heat-Up and Uniform Heat Distribution Thanks to Aluminm Trough	•
Ample Space for Ironed Laundry	•
Electrical Connection	
Mains Connection	2 AC 208 — 240V, 50 - 60Hz
Heating (kW)	3.1 - 3.7
Total Rated Load (kW)	3.2 - 3.8
Fuse Rating (A)	2 pole 20A
Plug	NEMA 6-20
Steam-Heated	•
Boiler (kW)	0.85
Water Tank Volume (oz)	27
Steam Availability at Start-Up (min)	4
Steam Delivery Time (min)	40
Type	
Space-Saving Installation Against a Wall Possible	•
Fold-Away Design	•
Designed and Tested for Commercial Use/Longevity	•
Casing	White Enamel
External Dimensions (H x W x D)	38" x 39" x 15"
Weight (lbs.)	86
Item Number	
White	53168002USA
UMRP&MAP / Retail Pricing	\$2,999 / \$3,299

B 3000

Product Overview



Design	B 3312	B 3847
Appliance Color	Lotus White	Lotus White
Iron Color	Black/Grey	Black/Lotus White
Ironing Board Color	Grey	Black
Display	Single Line	Single Line
Perfect Ironing Results		
Chrome-Plated Aluminium Honeycomb Soleplate	•	•
Steam Pressure in Bar	3,5	4,0
Vertical Steam	•	•
Stream Pulse / Continuous Steam	•/•	•/•
Steamer	–	•
Active Ironing Table (Inflation and Suction Function)	•	•
2-Stage Fan / Non-Stick Soleplate	–/•	•/•
Time-Saving Ironing		
Water Container Volume in Gallons	0.33	0.33
Removable Water Container	•	•
Ironing Multi-Layered Items	•	•
User Convenience		
All-in-One / 1-2 Lift System	•/•	•/•
Infinitely Variable Height Adjustment with Gas Pressure Stay	33" – 40"	33" – 40"
Selection of Water Hardness / Automatic Fan Switch-On / Switch-Off	•/•	•/•
Fan Memory Function / Prompted Descaling / Automatic Rinsing	•/•/•	•/•/•
Storage Compartment for Iron / Storage Compartment for Power Cord	•/•	•/•
Safety		
CoolDown Function / AutoOff Function	•/•	•/•
Technical Data		
Entire Machine		
Weight in lbs/Gross Weight (incl.packaging) in lbs	64/73	66/75
Dimensions (folded) (W x H x D)	19" x 50" x 15"	19" x 50" x 15"
Dimensions (set up) (W x H x D)	19" x 38" x 58"	19" x 38" x 58"
Dimensions (packaging) (W x H x D)	54" x 18" x 20"	54" x 18" x 20"
Connection Cable	98"	98"
Hand Iron	•	•
Steamer		
Brush Attachment	–	•
Rated Loads		
Rated Voltage (V)	120	120
Fuse Rating (A)/Rated Load (kW)/ Nominal Rating (W)	15/1,7/1700	15/1,7/1700
Accessories Supplied		
Non-Stick Soleplate/Steamer/Basic Ironing Table Cover	•/–/•	•/•/–
Premium Ironing Table Cover (Particularly Heat Resistant)	–	•
Steam Hose Holder/Mains Connection Cable Holder	•/•	•/•
Test Strips to Test Water Hardness/Descaling Tablets	•/•	•/•
Optional Accessories		
Steamer/Premium Ironing Table Cover/Basic Ironing Table Cover	•/•/•	•/•/•
UMRP&MAP / Retail Pricing		
	\$1,999 / \$2,199	\$2,499 / \$2,699
Item Number		
	13331221USA	13384721USA

Miele Cleaning Products

Cooking and Coffee



Oven Cleaner - 16.9 fl oz

- For use with self-cleaning ovens, PerfectClean surfaces, interior of speed and steam ovens, grill racks and Tepan Yaki

Item #1016291
MAP: \$12.95
List Price: \$12.95



DGClean - 8.45 fl oz

- Safely removes grease and residue for DG and DGC XL

Item #10172760
MAP: \$14.99
List Price: \$14.99



Ceramic and Stainless Steel Cleaner - 8.5 fl oz

- Glass ceramic and high-grade steel cleaner for removing fat splashes and marks by over-cooked stains

Item #10173130
MAP: \$12.95
List Price: \$12.95



Stainless Steel Conditioner - 8.5 fl oz

- Long-lasting, highly effective and reliable cleaning of large and small stainless steel surfaces

Item #09043590
MAP: \$12.95
List Price: \$12.95



Descaling Tablets 6 Tabs

- Cleaning agent tablets for removing mineral deposits from the heating element and water pathways

Item #10178350
MAP: \$19.95
List Price: \$19.95



Coffee Machine Cleaning Tablets - 10 Tabs

- For use in coffee machines for thorough removal of coffee oils and coffee residue

Item #10270530
MAP: \$19.95
List Price: \$19.95

Miele Cleaning Products

Cooking and Coffee



Coffee Machine Milk Pipework Cleaner - 100 Packets

- Cleaning agent for coffee machines. Effectively removes milk protein and fats

Item #10182210

MAP: \$39.99

List Price: \$39.99



Coffee Machine Silicone Grease

- Silicone grease for Miele coffee machine percolator unit

Item #05132001

MAP: \$11.96

List Price: \$11.96

Miele Cleaning Products

Dishwasher



UltraTabs Multi - 60 Tabs

- Each tab features a powerful enzyme formula and three-layer construction that delivers superior wash results

Item #10245660
MAP: \$29.99
List Price: \$29.99



Dishwasher Salt

- Dissolves during wash cycle and helps prevent scaling

Item #10248600
MAP: \$12.95
List Price: \$12.95



Rinse Aid - 16.9 fl oz

- Reduces lime and water stains on dishware

Item #10198910
MAP: \$10.95
List Price: \$10.95



DishClean Dishwasher Conditioner - 5.6 oz

- Removes grease, limescale and tarnishing from machine surfaces

Item #09959340
MAP: \$12.95
List Price: \$12.95



IntenseClean - 8.5 oz

- Removes dangerous limescale deposits from dishwashers and washing machines

Item #10130990
MAP: \$12.95
List Price: \$12.95



Dishwasher Freshener - 60 Rinse Cycles

- Miele's lemon freshener can help rid the dishwasher of unpleasant odors

Item #10118510
MAP: \$9.95
List Price: \$9.95

Miele Cleaning Products

Laundry



UltraWhite Powder - 5.5 lbs, 48 Loads

- Special formulation offering increased effectiveness, whitening and active stain remover

Item #10459720
MAP: \$29.99
List Price: \$29.99



UltraColor Powder - 4.0 lbs, 48 Loads

- Unique concentrated formula with advanced brighteners to keep all colors looking vibrant

Item #10459790
MAP: \$29.99
List Price: \$29.99



UltraColor Liquid - 2 L, 33 Loads

- Unique concentrated formula with advanced brighteners to keep all colors looking vibrant

Item #10223700
MAP: \$19.99
List Price: \$19.99



Sensitive Skin Powder - 5.5 lbs, 48 Loads

- New formulation offers excellent wash performance. Reduced pH level is even gentler to the skin

Item #10459870
MAP: \$29.99
List Price: \$29.99



WoolCare - 1.5 L, 37 Loads

- Designed for the special care of wool, silks and other fine fabric blends

Item #10249520
MAP: \$24.99
List Price: \$24.99



Fabric Softener - 1.5 L, 50 Loads

- Gives all washables a soft feeling and light pleasant scent, along with reducing static cling

Item #10240880
MAP: \$12.99
List Price: \$12.99

Miele Cleaning Products

Laundry



Down Detergent - 8.45 fl oz, 13 Loads

- Special purpose detergent effectively cares for pillows, comforters (duvets), sleeping bags, jackets and other washables

Item #10225720
MAP: \$14.95
List Price: \$14.95



Sportswear Detergent - 8.45 fl oz, 13 Loads

- Gentle care detergent deep cleans synthetics, fleece, microfibers and fabric blends

Item #10225930
MAP: \$14.95
List Price: \$14.95



Outdoor Detergent - 8.45 fl oz, 13 Loads

- Special formula for hiking outdoor gear and garments with water or wind-proof membranes

Item #10226470
MAP: \$14.95
List Price: \$14.95



Fabric Protector - 8.45 fl oz, 4 Applications

- Post-wash reproofing for garments and textiles made from synthetic or natural fibers, in particular sportswear, hiking wear and tablecloths

Item #10240630
MAP: \$19.99
List Price: \$19.99

Miele, Inc.
9 Independence Way
Princeton, NJ 08540

mieleusa.com
moreinfo@mieleusa.com

800.843.7231

Visit one of Miele's Experience Centers:

Beverly Hills
Boca Raton
Chicago
Coral Gables
Dallas
Manhattan
Princeton
San Francisco
Scottsdale
Seattle
Tysons Corner
Wellesley